



# Aegixera Ventures Private Limited

---

**Aegixera Ventures Private Limited** is a leading wholesale trader and supplier of advanced industrial safety and testing solutions. We offer a diverse portfolio of products including Testing Equipment, Explosion Proof Cameras, Flameproof Lighting Systems, Flameproof Fans, and other specialized equipment engineered for hazardous and high-risk industrial environments. Our focus is on delivering high-performance, certified, and reliable products that comply with global safety standards, ensuring operational safety and efficiency across multiple industries operations.



# Table of Contents

- **Company Profile**
  - About The Company
  - Vision
  - Mission
  - Our Products
  - Industries We Serve
  - Why Choose Us?
  - Leadership Team
  - Quality Assurance
  - Our Commitments
- **Our Wide Range of Products**
  - Flameproof Lights
  - Explosion Proof Camera
  - Interactive Flat Panel
  - Cable Gland
  - Flameproof Switch Socket
  - Explosion Proof Junction Box
  - Air Compressor
  - Obstruction Light
  - Testing Equipment
  - Other Products
- **Factsheet**

## 1. About the Company

Aegixera Ventures Private Limited, established in 2026, is a professionally managed organization engaged in the wholesale trading and supply of industrial safety, surveillance, and testing equipment. The company offers a comprehensive range of products including Testing Equipment, Explosion Proof Cameras, Flameproof Lighting Systems, Flameproof Fans, and other specialized safety solutions designed for hazardous and high-risk industrial environments.

We are committed to providing reliable, high-quality, and technologically advanced solutions that help organizations maintain safety, operational efficiency, and regulatory compliance. Our focus is on delivering products that meet stringent industry standards while ensuring durability, performance, and long-term value for our customers.

With a strong understanding of industry requirements and emerging technologies, we continuously strive to deliver practical, efficient, and cost-effective solutions tailored to the needs of our clients.

---

## 2. Vision

To become a trusted and recognized leader in industrial safety and surveillance solutions, delivering innovative and reliable products that contribute to safer and smarter industrial environments.

---

## 3. Mission

- To Provide high-quality industrial safety and surveillance equipment that meets global standards.
  - To Deliver efficient and customized solutions to address the critical operational challenges of organizations.
  - To Build long-term partnerships with clients through reliability, transparency, and service excellence.
  - To Continuously improve through innovation, technology adoption, and customer-focused practices.
- 

## 4. Our Products

We offer a wide range of industrial products designed to meet safety and monitoring requirements in hazardous and critical environments.

Our product range includes:

- Testing Equipment
- Explosion Proof Cameras
- Flameproof Lights
- Flameproof Fans
- Industrial Safety Equipment
- Surveillance and Monitoring Solutions
- Specialized Equipment for Hazardous Locations

All products are sourced from trusted and reputed manufacturers to ensure quality, reliability, and compliance with industry standards.

## 5. Industries We Serve

Our solutions cater to a wide range of industries and institutions, including:

- Oil & Gas Industry
  - Petrochemical Plants
  - Manufacturing Industries
  - Power Plants
  - Educational Institutions
  - Hospitals and Healthcare Facilities
  - Transportation Hubs (Railway Stations, Airports, Bus Terminals)
  - Police Stations and Security Agencies
  - Petrol Pumps and Fuel Stations
  - Banking and Financial Institutions
  - Government and Public Infrastructure Projects
- 

## 6. Why Choose Us

We are committed to delivering value-driven solutions to our clients. Our key strengths include:

- Quality Assured Products
- Reliable Vendor Network
- Industry Knowledge and Experience
- Customer-Centric Approach
- Timely Delivery
- Competitive Pricing
- Customized Solutions
- Professional Support and Service

These factors have enabled us to build strong relationships with clients across different sectors.

## 7. Leadership Team

The company is guided by the dynamic leadership of Mr. Pankaj Verma and Mr. Rahul Saxena, whose industry knowledge and strategic vision play a key role in the company's growth and success.

Their extensive experience, strong business ethics, and commitment to excellence have helped the organization develop a strong market presence and build lasting relationships with clients across the country.

---

## 8. Quality Assurance

Quality is a fundamental aspect of our operations. We ensure that all products supplied by us meet high standards of safety, reliability, and performance.

Our products are sourced from trusted vendors and manufacturers who follow stringent quality control processes. This ensures that every product delivered to our customers offers consistent performance, durability, and compliance with industrial standards.

## 9. Our Commitment

At Aegixera Ventures Private Limited, we believe in delivering solutions that create value, enhance safety, and support operational excellence. Our commitment to quality, reliability, and customer satisfaction continues to drive our growth and strengthen our position in the industry.



### Flameproof Tube Light Fixture / LED Tube Light Fitting

Feature	Technical Specification	Key Performance
<b>Hazardous Rating</b>	Ex d IIA / IIB / IIC T6	Zone 1, 2, 21 & 22 Certified
<b>Enclosure</b>	Die-Cast Aluminum Alloy (LM6)	High-Impact & Corrosion Proof
<b>Glass Tube</b>	High-Strength Toughened Glass	Heat & Pressure Resistant
<b>Light Source</b>	Energy-Efficient LED Tubes	Long Life (50,000+ Hours)
<b>Ingress Rating</b>	IP65 / IP66	Weatherproof & Dust-tight
<b>Internal Wiring</b>	Heat Resistant Teflon / FRLS	Maximum Electrical Safety
<b>Configuration</b>	Single (1x18W/20W)   Double (2x18W/20W)	Flexible Lumen Output

### Flameproof Well Glass Light

Feature	Technical Specification	Key Performance
<b>Protection</b>	Ex d IIA / IIB / IIC T6	Zone 1, 2, 21 & 22 Certified
<b>Housing</b>	Die-Cast Aluminum Alloy (LM6)	High-Grade Corrosion Resistance
<b>Glass Type</b>	Toughened Borosilicate Glass	Thermal Shock & Impact Resistant
<b>Light Source</b>	LED (integrated) / CFL / GLS	Uniform 360° Illumination
<b>Ingress Rating</b>	IP65 / IP66	Weatherproof & Dust-tight
<b>Wire Guard</b>	MS Galvanized / Stainless Steel	Extra Protection for Glass
<b>Mounting</b>	Ceiling / Wall / Bracket / Pole	Versatile Installation Options



### Flameproof Clean Room Light Fitting

Feature	Technical Specification	Industrial Benefit
<b>Hazardous Rating</b>	Ex d IIA/IIB T6 Gb	Zone 1, 2, 21 & 22 Certified
<b>Housing Material</b>	Stainless Steel (SS304/316L) or Powder Coated Alum.	Corrosion & Chemical Resistant
<b>Design Type</b>	Bottom Opening / Top Opening	Seamless & Flush Mounting
<b>Ingress Rating</b>	IP65 / IP66	Dust-tight & Easy to Decontaminate
<b>Light Source</b>	High-Lumen LED Panel / Tubes	Uniform & Glare-free Lighting
<b>Front Cover</b>	Toughened Glass (Heat Resistant)	High Impact & Pressure Stability
<b>Compliance</b>	ATEX, IECEx, PESO/BIS	Pharma & Biotech Standards

### Flameproof Lighting Linear Luminaire with LED GRP

Feature	Technical Specification	Key Performance
<b>Protection</b>	Ex eb mb IIC T4 Gb / Ex tb IIIC	Zone 1, 2, 21 & 22 Certified
<b>Housing</b>	Glass Reinforced Polyester (GRP)	Corrosion & UV Resistant
<b>Light Source</b>	High-Efficiency LED Modules	50,000+ Hours Lifespan
<b>Ingress Rating</b>	IP66 / IP67	Dust-tight & Water-jet Proof
<b>Diffuser</b>	Polycarbonate (High Impact)	Uniform & Glare-free Light
<b>Voltage</b>	110V - 277V AC, 50/60 Hz	Universal Power Input
<b>Emergency</b>	Optional Battery Backup (90-180 min)	Safe Egress during Power Outage





### Explosion Proof HD Camera

Feature	Technical Specification	Key Performance
Certification	Ex d IIC T6 Gb / Ex tb IIIC T80°C	Zone 1, 2, 21 & 22 Certified
Imaging	Full HD / 4K Resolution	Crystal Clear Visual Clarity
Housing	SS316L / SS304 Stainless Steel	Corrosion & Flame Resistant
Ingress Rating	IP68 / IP69	Submersible & Dust-Proof
Night Vision	Smart IR / Ultra Low-Light	Clear Imaging in Zero Light
Functionality	Fixed / Bullet / Dome Variants	Versatile Industrial Mounting
Compliance	ATEX, IECEx, PESO/BIS	Global Safety Standard

### Explosion Proof Camera

Feature	General Technical Specification	Industrial Benefit
Hazardous Rating	Ex d IIC T6 Gb / Ex tb IIIC T80°C	Zone 1, 2, 21 & 22 Certified
Enclosure	Stainless Steel 316L / 304	Maximum Corrosion Resistance
Video Resolution	2MP / 4MP / 5MP / 8MP (4K)	High-Definition Surveillance
Ingress Rating	IP68 / IP69	Waterproof & Dust-tight
Night Vision	Smart IR / Low-Light Performance	24/7 Monitoring in Dark Areas
Compression	H.265+ / H.264 / MJPEG	Optimized Bandwidth & Storage



### 4 MP Explosion Proof Network Speed Dome Camera

Feature	Technical Specification	Key Performance
Resolution	4.0 Megapixel (2560 × 1440)	High-Definition Detail
PTZ Control	360° Endless Pan   -90° to 90° Tilt	High-Speed Wide Surveillance
Protection	Ex d IIC T6 Gb / Ex tb IIIC T80°C Db	Zone 1, 2, 21 & 22 Certified
Optical Zoom	25x / 32x / 45x Optical Zoom	Long-Range Detailed Monitoring
Housing	Stainless Steel 316L / 304	IP68 Corrosion & Weatherproof
Smart Tech	H.265+   Smart IR (100m - 200m)	120dB WDR & Night Vision

### 5 MP Explosion Proof Network Bullet Camera

Feature	Technical Specification	Key Performance
Imaging	5.0 Megapixel Progressive Scan CMOS	2592 × 1944 @ 30fps
Protection	Ex d IIC T6 Gb / Ex tb IIIC T80°C Db	Zone 1, 2, 21 & 22 Certified
Optics	2.8mm / 4mm / 6mm Fixed or Varifocal	Smart IR (Up to 30m - 50m)
Housing	Stainless Steel 304 or 316L	IP68 Weather & Corrosion Proof
Video	H.265+ / H.264+ Compression	120dB WDR & 3D DNR
Connectivity	RJ45 10M/100M   PoE (802.3af)	ONVIF (Profile S/G/T) Ready



Feature	Technical Specification	Key Performance
Imaging	5.0 Megapixel Progressive Scan CMOS	2592 × 1944 @ 30fps
Protection	Ex d IIC T6 Gb / Ex tb IIIC T80°C Db	Zone 1, 2, 21 & 22 Certified
Optics	2.8mm / 4mm / 6mm Fixed or Varifocal	Smart IR (Up to 30m - 50m)
Housing	Stainless Steel 304 or 316L	IP68 Weather & Corrosion Proof



### Hikvision DS-D5B86RB/EL 86" 4K IFPD

Feature	Technical Specification	Key Performance
Display	86" UHD 4K (3840x2160) @ 60Hz	Zero-Gap & Anti-Glare
System	Android 13.0   8GB RAM   64GB ROM	High-Performance SoC
Touch	40-Point IR Touch   < 5ms Latency	9H Toughened Glass
Network	Wi-Fi 6   Bluetooth 5.2   RJ45	High-Speed Connectivity
Ports	USB-C (65W PD), HDMI, USB 3.0	Full-Function Interface
Audio/PC	Dual 20W Speakers   OPS Slot	Integrated Windows Ready

### Hikvision DS-D5B75RB/EL 75" 4K IFPD

Feature	Technical Specification	Key Performance
Visuals	75" UHD 4K (3840x2160)   IPS	Zero-Gap Optical Bonding
System	Android 13.0   8GB RAM   64GB	Quad-core A55 Processor
Touch	40-Point IR Touch   < 5ms	Gesture & Pen Recognition
Wireless	Wi-Fi 6   BT 5.2   NFC	Instant Screen Casting
I/O Ports	USB-C (65W PD), HDMI, RJ45	Data + High-Speed Charging
Audio/PC	Dual 20W Hi-Fi   OPS Slot	Windows 11 Ready



### Hikvision DS-D5B65RB/EL 65" 4K IFPD

Feature	Technical Specification	Key Performance
Display	65" UHD 4K (3840x2160) @ 60Hz	Zero-Gap & Anti-Glare
System	Android 13.0   8GB RAM   64GB ROM	High-Performance SoC
Touch	40-Point IR Touch   < 5ms Latency	9H Toughened Glass
Network	Wi-Fi 6   Bluetooth 5.2   RJ45	High-Speed Connectivity
Ports	USB-C (65W PD), HDMI, USB 3.0	Full-Function Interface
Audio/PC	Dual 20W Speakers   OPS Slot	Integrated Windows Ready

### Hikvision DS-D5B75RB/EL 75" 4K IFPD

Feature	Technical Specification	Key Performance
Display	75" UHD 4K (3840x2160) @ 60Hz	Zero-Gap & Anti-Glare
System	Android 13.0   8GB RAM   64GB ROM	High-Performance SoC
Touch	40-Point IR Touch   < 5ms Latency	9H Toughened Glass
Network	Wi-Fi 6   Bluetooth 5.2   RJ45	High-Speed Connectivity
Ports	USB-C (65W PD), HDMI, USB 3.0	Full-Function Interface
Audio/PC	Dual 20W Speakers   OPS Slot	Integrated Windows Ready



Feature	Technical Specification	Key Performance
Display	75" UHD 4K (3840x2160) @ 60Hz	Zero-Gap & Anti-Glare
System	Android 13.0   8GB RAM   64GB ROM	High-Performance SoC



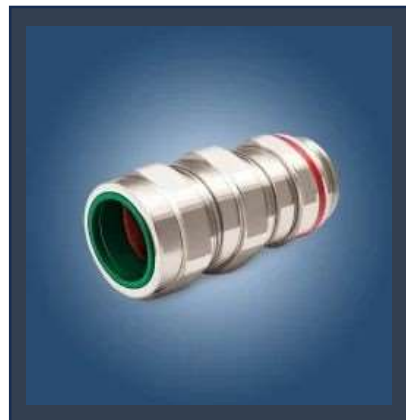
### Flameproof Cable Gland (Ex d)

Feature	Technical Specification	Standard / Compliance
Zone/Gas	Zone 1 & 2   Groups IIA, IIB, IIC	IS/IEC 60079-1
Material	SS316, SS304, or Nickel-Plated Brass	High-Grade Corrosion Resistance
Seal Type	Dual LSOH (Low Smoke Zero Halogen)	IP66 / IP67 Protection
Cables	Armoured (SWA/STA) & Unarmoured	Single & Double Compression
Threads	Metric (M20-M100), NPT, ET, BSP	Universal Compatibility
Approval	ATEX, IECEx, PESO, BIS	Global Safety Certified

### Flameproof Brass Cable Glands

Feature	Brass Ex d Gland Details	Standard Compliance
Protection Mode	Ex d (Flameproof)	IS/IEC 60079-1
Hazardous Zones	Zone 1 & 2 (Gas)   Zone 21 & 22 (Dust)	Global Safety Zones
Base Material	Brass (IS 319 / CW614N)	High Mechanical Strength
Surface Finish	Nickel-Plated / Chrome-Plated	Superior Corrosion Resistance
Seal Type	Dual LSOH (Low Smoke Zero Halogen)	Fire & Weather Safety
Ingress Protection	IP66 / IP67	Dust-tight & Water-jet Proof
Configuration	Single & Double Compression	For Armoured & Unarmoured Cables
Cable Armor	SWA / STA / Wire Braid	Universal Armor Clamping
Gas Groups	IIA, IIB, IIC	All Explosive Gas Groups

Certifications: ATEX, IECEx, and BIS/PESO | Certified for Global Use



### Double Compression Flameproof Cable Glands

Feature	Technical Details	Standard Compliance
Protection Type	Ex d (Flameproof)	IS/IEC 60079-1
Hazardous Zones	Zone 1 & 2 (Gas)   Zone 21 & 22 (Dust)	Global Hazardous Areas
Gas Groups	IIA, IIB, IIC (Including Hydrogen)	High-Risk Atmospheres
Material Options	Nickel-Plated Brass / SS316L / SS304	Corrosion Resistant Alloys
Compression Type	Double Compression (Inner & Outer)	Enhanced Cable Grip & Seal
Ingress Protection	IP66 / IP67 / IP68	Dust-tight & Waterproof
Sealing Material	LSOH (Low Smoke Zero Halogen)	Fire Safety Grade Silicone/Neoprene
Armor Clamping	SWA / STA / Braided Armor	Reliable Electrical Continuity
Operating Temp.	-60°C to +135°C (Material dependent)	Extreme Environments

Gas Groups: IIA, IIB, IIC | All Explosive Gas Groups | International Safety Standards

### Flameproof Cable Gland

Feature	High-Safety Variants (Ex d / Ex de)	Standard Safety Variants (Ex nR / Ex nA)
Hazardous Zones	Zone 1, 2 (Gas) & Zone 21, 22 (Dust)	Zone 2 (Gas) & Zone 22 (Dust)
Protection Concept	Containment of internal explosion	Prevention of ignition / Non-sparking
Safety Interlock	Mandatory (Switch-Before-Connect)	Mechanical Interlock available
Breaking Capacity	AC-3 Load-break internal switch	Standard Industrial Load-break
Housing Material	Die-Cast Aluminum (LM6) / GRP	GRP / Aluminum Alloy
Ingress Protection	IP66 / IP67	IP65 / IP66
Gas Groups	IIA, IIB, IIC	IIA, IIB, IIC
Current Ratings	16A, 32A, 63A, 125A	16A, 32A, 63A

Armor Clamping: SWA / STA / Braided Armor | Operating Temp.: -60°C to +135°C (Material dependent) | Certifications: ATEX, IECEx, and PESO/BIS



Reliable Electrical Continuity | Extreme Environments | International Safety Standards

Feature: High-Safety Variants (Ex d / Ex de) | Standard Safety Variants (Ex nR / Ex nA)



SolConeX & CES Series Plugs and Sockets

Feature	SolConeX / CES Series Details	Standard Compliance
Hazardous Zones	Zone 1, 2 (Gas)   Zone 21, 22 (Dust)	IEC/EN 60079 Series
Protection Type	Ex de (Flameproof + Increased Safety)	Full Explosion Protection
Safety Mechanism	Full Mechanical Interlock	Prevents removal while energized
Breaking Capacity	AC-3 Motor Switching Capacity	Integrated Load-Break Switch
Contact Tech	Silver-Layered Lamellar Contacts	Self-Cleaning & Low Resistance
Housing Material	Glass-Fiber Reinforced Polyester (GRP)	Chemical & Impact Resistant
Ingress Protection	IP66	Dust-tight & Water-jet Proof
Voltage Coding	IEC 60309 Standard Color-Coding	Easy Voltage Identification

Explosion-Proof / Flameproof Plug & Socket

Feature	Flameproof (Ex d / Ex de)	Non-Sparking (Ex nR / Ex nA)
Zone Application	Zone 1, 2, 21 & 22 (All Zones)	Zone 2 & 22
Protection Concept	Contains internal explosion	Prevents ignition/Restricts breathing
Safety Interlock	Mandatory (Switch-Before-Connect)	Mechanical Interlock available
Breaking Capacity	AC-3 Load-break internal switch	Standard Load-break
Housing Material	Die-Cast Aluminum (LM6) / GRP	GRP / Aluminum Alloy
Ingress Protection	IP66 / IP67	IP65 / IP66
Gas Groups	IIA, IIB, IIC (Hydrogen compatible)	IIA, IIB, IIC
Current Ratings	16A, 32A, 63A, 125A	16A, 32A, 63A



Non-Sparking / Explosion-Proof Plug & Sockets

Feature	Non-Sparking (Ex nR / Ex nA)	Standard Compliance
Hazardous Zone	Zone 2 (Gas) & Zone 22 (Dust)	IEC / EN 60079 series
Protection Mode	Restricts breathing of flammable gas	Ex nR (Restricted Breathing)
Ingress Protection	IP65 / IP66	Weatherproof & Dust-tight
Housing Material	High-Grade GRP or Die-Cast Aluminum	Corrosion & Impact resistant
Amperage Range	16A, 32A, 63A, 125A	Multi-load capacity
Pin Configuration	2P+E / 3P+E / 3P+N+E	As per IEC 60309
Voltage Range	110V / 230V / 415V / 500V	Color-coded identification
Certifications	ATEX, IECEx, and PESO	Global Safety Standards

Feature

Hazardous Zone

Protection Mode

Ingress Protection

Housing Material

Amperage Range

Pin Configuration

Voltage Range

Certifications

Non-Sparking (Ex nR / Ex nA)

Zone 2 (Gas) & Zone 22 (Dust)

Restricts breathing of flammable gas

IP65 / IP66

High-Grade GRP or Die-Cast Aluminum

16A, 32A, 63A, 125A

2P+E / 3P+E / 3P+N+E

110V / 230V / 415V / 500V

ATEX, IECEx, and PESO

Standard Compliance

IEC / EN 60079 series

Ex nR (Restricted Breathing)

Weatherproof & Dust-tight

Corrosion & Impact resistant

Multi-load capacity

As per IEC 60309

Color-coded identification

Global Safety Standards



### Aluminium Flameproof Junction Box

Feature	Flameproof (Ex d)	Increased Safety (Ex e)	Non-Sparking (Ex nR)
Protection Principle	Contains internal explosion	Prevents sparks/high heat	Restricts gas breathing
Hazardous Zones	Zone 1 & 2 (Gas)	Zone 1 & 2 (Gas)	Zone 2 (Gas)
Dust Protection	Zone 21 & 22	Zone 21 & 22	Zone 22
Material Options	Die-Cast Alum. (LM6) / SS316L	GRP / Stainless Steel / Alum.	Aluminum / GRP
Ingress Protection	IP66 / IP67	IP66	IP65 / IP66
Gas Groups	IIA, IIB, IIC	IIA, IIB, IIC	IIA, IIB, IIC
Temp. Class	T4 / T5 / T6	T5 / T6	T5 / T6
Certifications	ATEX, IECEx, PESO, BIS	ATEX, IECEx, PESO	ATEX, IECEx

### Flameproof Brass Cable Glands (Ex d / IP66)

Feature	Technical Specification	Key Performance
Hazardous Rating	Ex d IIA / IIB / IIC T6	Zone 1, 2, 21 & 22 Certified
Material	Die-Cast Aluminum (LM6) / SS316L	Corrosion & Impact Resistant
Ingress Rating	IP66 / IP67	Dust-tight & Weatherproof
Cable Entries	Metric / NPT / ET / BSP	Customizable Hole Sizes
Terminals	Standard / Push-in / Disconnect	High-Grade Electrical Connection
Hardware	Stainless Steel (SS304/SS316)	Rust-proof External Screws
Gasket	Neoprene / Silicone	Continuous Sealing Protection



Temp. Class T4 / T5 / T6 T5 / T6 T5 / T6



### Flameproof Junction Box

Feature	Technical Specification	Key Performance
Hazardous Rating	Ex d IIA / IIB / IIC T6	Zone 1, 2, 21 & 22 Certified
Material	Die-Cast Aluminum (LM6) / SS316L	Corrosion & Impact Resistant
Ingress Rating	IP66 / IP67	Dust-tight & Weatherproof
Cable Entries	Metric / NPT / ET / BSP	Customizable Hole Sizes
Terminals	Standard / Clip-on / Disconnect	Reliable Electrical Connection
Hardware	Stainless Steel (SS304/SS316)	Rust-proof External Screws
Gasket	Neoprene / Silicone	Continuous Sealing Protection

Feature	Technical Specification	Key Performance
Hazardous Rating	Ex d IIA / IIB / IIC T6	Zone 1, 2, 21 & 22 Certified
Material	Die-Cast Aluminum (LM6) / SS316L	Corrosion & Impact Resistant
Ingress Rating	IP66 / IP67	Dust-tight & Weatherproof
Cable Entries	Metric / NPT / ET / BSP	Customizable Hole Sizes
Terminals	Standard / Clip-on / Disconnect	Reliable Electrical Connection
Hardware	Stainless Steel (SS304/SS316)	Rust-proof External Screws
Gasket	Neoprene / Silicone	Continuous Sealing Protection



### Reciprocating Air Compressor

Feature	Technical Specification	Performance Benefit
Type	Single / Two-Stage (Oil Lubricated)	High Pressure Efficiency
Pressure Range	7 bar to 12 bar (Standard / High)	Versatile Industrial Use
Capacity (CFM)	5 CFM to 100+ CFM	Scalable Air Delivery
Motor Power	1 HP to 20+ HP (IE2/IE3 Grade)	Energy Efficient Operation
Receiver Tank	50L to 500L+ (ASME Certified)	Stable Air Storage
Cooling	Air Cooled / Water Cooled	Reliable Thermal Control
Drive	Belt Driven / Direct Driven	Low Vibration & Easy Maint.

### Oil Free Reciprocating Air Compressor

Feature	Technical Specification	Performance Benefit
Technology	100% Oil-Less Compression	Zero Risk of Air Contamination
Air Quality	Class 0 Certified Air	Ideal for Pharma & Food Grade
Cylinder/Rings	PTFE (Teflon) Coated / Composite	Self-Lubricating & Low Friction
Pressure Range	7 bar to 10 bar	Consistent High-Pressure Output
Noise Level	Ultra-Quiet (55 - 70 dB)	Indoor & Laboratory Friendly
Receiver Tank	Internal Epoxy Coated / Stainless Steel	Prevents Internal Corrosion & Rust
Cooling System	High-Efficiency Air Cooled	Prevents Overheating in Dry Run



### High Pressure Air Booster Compressor

Feature	Technical Specification	Performance Benefit
Function	Pressure Boosting (Inlet to Outlet)	Increases existing plant air pressure
Inlet Pressure	5 bar to 10 bar (Standard)	Uses pre-compressed air source
Outlet Pressure	25 bar to 100+ bar	Ideal for PET blowing & Leak testing
Cooling	Inter-stage & After-coolers	Manages high heat during compression
Lubrication	Oil-Lubricated / Oil-Free	Dependent on end-use application
Drive System	V-Belt Driven / Direct Drive	High torque for heavy-duty loads
Safety Features	Dual Safety Valves & Auto-Cutoff	Over-pressure & Thermal protection

Feature	Technical Specification	Performance Benefit
Function	Pressure Boosting (Inlet to Outlet)	Increases existing plant air pressure
Inlet Pressure	5 bar to 10 bar (Standard)	Uses pre-compressed air source
Outlet Pressure	25 bar to 100+ bar	Ideal for PET blowing & Leak testing
Cooling	Inter-stage & After-coolers	Manages high heat during compression
Lubrication	Oil-Lubricated / Oil-Free	Dependent on end-use application
Drive System	V-Belt Driven / Direct Drive	High torque for heavy-duty loads
Safety Features	Dual Safety Valves & Auto-Cutoff	Over-pressure & Thermal protection



### Medium Intensity Obstruction Light

Feature	Technical Specification	Key Performance
Type Compliance	ICAO Type A, B, or C / FAA L-864	International Aviation Safety
Light Source	High-Power OSRAM/CREE LEDs	100,000+ Hours Lifespan
Intensity	2,000cd to 20,000cd (Adjustable)	High Visibility for Aircrafts
Flash Rate	20 to 60 FPM (Flashes Per Minute)	Synchronized or Steady Burn
Housing	Die-Cast Aluminum (LM6) / SS	UV & Corrosion Resistant
Ingress Rating	IP66 / IP67	Weatherproof & Lightning Protected
Sensors	Built-in Photocell	Automatic Dusk-to-Dawn Operation
Voltage	110V - 277V AC / 48V DC	Universal Power Compatibility

### Low Intensity Obstruction Light

Feature	Technical Specification	Key Performance
ICAO Compliance	Type A / Type B	International Aviation Safety
Light Source	Ultra-Bright LEDs	Low Power & Long Life
Intensity	>10 cd / >32 cd	Consistent Night Visibility
Lighting Mode	Steady Burn (Red Color)	Aviation Standard Warning
Housing	Die-Cast Aluminum / Polycarbonate	UV Stabilized & Rust Proof
Ingress Rating	IP66 / IP67	Weatherproof & Dust-tight
Auto Control	Built-in Photocell	Automatic Dusk-to-Dawn
Protection	Inbuilt Surge & Lightning Protection	Safe during Thunderstorms



Sensors

Built-in Photocell

Automatic Dusk-to-Dawn Operation



### High Intensity Obstruction Light

Feature	Technical Specification	Key Performance
Compliance	ICAO Type A & B / FAA L-856	International Aviation Standard
Light Source	High-Power LED Array	White Flashing (Day/Night)
Intensity (Day)	2,00,000 cd (±25%)	Visible in Bright Sunlight
Intensity (Night)	2,000 cd (Auto-dimming)	Prevents Pilot Glare at Night
Flash Rate	40 to 60 FPM	High-Visibility Warning Signal
Housing	Marine Grade Aluminum / SS	Extreme Weather & Wind Resistant
Ingress Rating	IP67 / IP68	Submersible & Dust-tight
Monitoring	GPRS / Modbus / Dry Contact	Remote Real-time Status

Feature	Technical Specification	Key Performance
Compliance	ICAO Type A & B / FAA L-856	International Aviation Standard
Light Source	High-Power LED Array	White Flashing (Day/Night)
Intensity (Day)	2,00,000 cd (±25%)	Visible in Bright Sunlight
Intensity (Night)	2,000 cd (Auto-dimming)	Prevents Pilot Glare at Night
Flash Rate	40 to 60 FPM	High-Visibility Warning Signal
Housing	Marine Grade Aluminum / SS	Extreme Weather & Wind Resistant
Ingress Rating	IP67 / IP68	Submersible & Dust-tight
Monitoring	GPRS / Modbus / Dry Contact	Remote Real-time Status



### Digital Torque Tester

Feature	Technical Specification	Quality Benefit
Measurement	Opening & Tightening Torque	Bi-directional Testing
Display	High-Resolution Digital LCD	Easy & Error-free Readings
Accuracy	± 0.5% of Full Scale	High Precision Repeatability
Units	Nm, Ncm, kgf.cm, lbf.in	Universal Unit Conversion
Capacity	10 Nm / 20 Nm / 50 Nm (Variants)	Scalable for Different Caps
Data Output	USB / RS232 Interface	PC Link for QC Reporting
Clamping	Adjustable Universal Gripper	Fits Various Bottle Shapes

### Wine Cork Pull Tester

Feature	Technical Specification	Quality Benefit
Measurement	Extraction / Pull-out Force	Accurate Cork Seal Testing
Capacity	0 - 1000 N / 100 kgf (Standard)	High-Strength Pull Capacity
Display	Digital LCD / Peak-Hold	Real-time & Max Force Reading
Accuracy	± 0.5% of Full Scale	Reliable & Repeatable Data
Grip Type	Universal Bottle Clamp	Fits Various Neck Diameters
Units	N, kgf, lbf (Switchable)	Global Unit Compatibility
Data Output	RS232 / USB Interface	Direct PC Link for QC Reports



### Automatic Wire Crimp Tester

Feature	Technical Specification	Quality Benefit
Operation	Fully Automatic (Motorized)	Constant Speed & No Manual Bias
Measurement	Tensile Pull Strength	Precise Crimp Quality Check
Force Capacity	500 N / 1000 N / 2000 N	Wide Range of Wire Gauges
Pull Speed	25 mm/min to 100 mm/min	Adjustable as per ISO/UL Standards
Accuracy	± 0.5% of Full Scale	Reliable & Repeatable Readings
Display	High-Resolution Digital LCD	Peak Force & Break Point View
Interface	USB / RS232 Port	PC Link for Compliance Reports

### Box Compression Tester

Feature	Technical Specification	Quality Benefit
Measurement	Stacking & Compression Strength	Ensures Box Load Capacity
Platform Size	450x450mm / 600x600mm / 1000x1000mm	Fits Various Carton Sizes
Force Capacity	500 kgf / 1000 kgf / 2000 kgf	High-Load Testing Range
Accuracy	± 1% of Full Scale	Precise & Reliable Results
Display	Microprocessor Digital LCD	Real-time Load & Deflection
Speed	10 mm/min ± 3 mm/min (Standard)	Industry Standard Test Speed
Safety	Over-travel & Overload Limit Switches	Protects Machine from Damage



Feature	Technical Specification	Quality Benefit
Measurement	Stacking & Compression Strength	Ensures Box Load Capacity
Platform Size	450x450mm / 600x600mm / 1000x1000mm	Fits Various Carton Sizes



Flameproof Led Light Fittings



Explosion-Proof PT CamStation



Horizontal Wire Pull Tester



Stainless Steel Cable Glands



DS-D5C86RB/B-UHK  
86-inch Interactive Flat Panel



Explosion Proof Air Condition



Explosion Proof Air Conditioner



Fever Screening Handheld Camera



Industrial Thermal Imaging



PS200 Portable Multi Gas



OLDHAM MX 43 Controller



Flameproof Telephone System



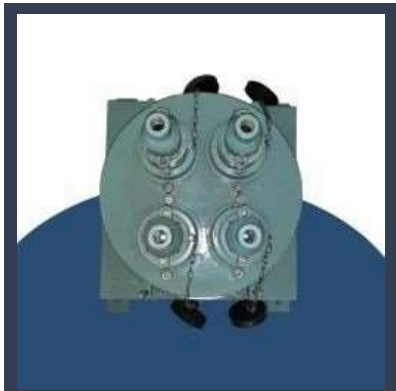
Flame Proof Mobile Phones



Explosion Proof Push Button



Flameproof Push Button



Flameproof Multiple Switch Socket



Explosion Proof Extra-Low Voltage Wall-Mounting Switch & Sockets



Flame Proof Dol Starter With Switch



Flameproof DOL Starter



Fanless Panel Pc



Explosion Proof Panel PC



Top Drive Cable Assemblies



Earth Integrity Monitor



Flameproof Hooter With Beacon



Flameproof Hooter With Flasher



Screw Air Compressor



Tank Mounted Screw Air Compressor



Flameproof Rotary Switch



Rubber Insulated Power



Ex-Proof Solenoid Directional Valves



Wall Mount Paging Station



Flir Thermal Imager



Flameproof IIB+H2 Enclosures



Flameproof Control Panel



Explosion Proof HMI

Explosion Proof HMI



Silicone Rubber Cable



Flameproof Control Panel



Food Texture Analyzer



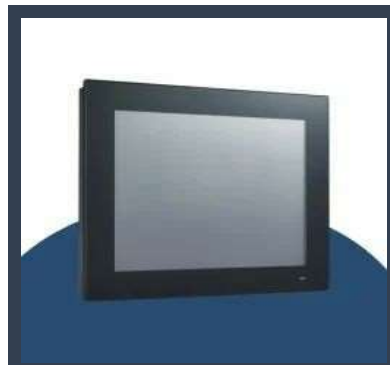
Amphe-EX Series Hazardous Rated Connectors EX Zone 1 and 2



Low Intensity Aviation Warning Lights



Explosion Proof Pendant Light Fittings



Fanless Panel Pc Touch Screen



Fanless Panel Pc



Refrigerated Air Dryer Cables

---

## FACTSHEET

---

Particular	Details
Company Name	Aegixera Ventures Private Limited
Year of Establishment	2026
Nature of Business	Wholesale Trader & Supplier
Legal Status of Firm	Private Limited
Total Number of Employees	Upto 10 People
GST Registration	Available
Registered Office	Prayagraj, Uttar Pradesh, India
Operational Area	Pan India
Primary Business Activities	Industrial Safety Equipment, Explosion Proof Cameras, Flameproof Lights, Testing Equipment
Industries We Serve	Oil & Gas, Petrochemical, Chemical, Manufacturing, Power Plants
Leadership	Mr. Pankaj Verma – Partner
	Mr. Rahul Saxena – Partner

## Contact Us

**AEGIXERA VENTURES PRIVATE LIMITED**

**Contact Persons:** Pankaj Verma & Rahul Saxena

**Email Id:** [info@aegixeraventures.in](mailto:info@aegixeraventures.in)

*Thank you*